



THE WORLDWIDE LEADER
OF BACKGROUNDS AND PHOTOGRAPHIC PRODUCTS

2017

A LETTER FROM THE CHAIRMAN

As we celebrate our 80th anniversary this year, we reflect on the many exciting, arduous, yet rewarding life stages our company has endured over the decades. Family-run from the beginning in 1937, the Savage brand is fortunate to have thrived through changing economic conditions as well as dramatic shifts in the photographic industry itself over recent years. If there's one thing we've learned through it all, it is the important partnership of innovation and consistency to provide real solutions with meaningful support to our valued customers.

More than ever, we look forward to helping you achieve your professional and creative goals for the new year and beyond.

We look forward to receiving your feedback on our 2017 product offering and invite you to contact us directly with any suggestions you may have to better serve you and your peers. Please accept our deep appreciation of your role as a valued partner in our sustained growth and the continuation of Savage Universal as a worldwide leader in the photographic industry.

Richard Pressman
Chairman of the Board

Sylvester Hank
President

Rich Reiser
Executive Vice President, Chief Operating Officer

Rich Memoli
Vice President of Sales



I N D E X

SEAMLESS BACKGROUND PAPER	4
PRINTED PAPER BACKGROUNDS	6
VINYL BACKGROUNDS	8
MUSLIN BACKGROUNDS	10
CANVAS & SOLID FABRIC BACKGROUNDS	12
COLLAPSIBLE BACKGROUNDS	14
TRANSLUM TM	16
GREEN SCREENS & DIGITAL KITS	17
FLOOR DROPS	18
LED LIGHTING	22
PRODUCT PHOTOGRAPHY KITS	27
BACKGROUND STANDS	28
LIGHT STANDS	30
UMBRELLAS & REFLECTORS	31
STUDIO ACCESSORIES	32
SPECIALTY BACKGROUNDS	33
MAT & MOUNT BOARDS	34

PHOTO CREDITS

ON THE COVER: CRAIG STIDHAM - Plum Seamless Background Paper PAGE 4: DAVID HAKIMAKI - Orchid Seamless Background Paper RYAN WALSH - Flamingo Seamless Background Paper MIGUEL QUILES - Ultramarine Seamless Background Paper
PAGE 7: RYAN WALSH - Printed Background Paper PAGE 8: RYAN WALSH - White Vinyl Background PAGE 11: RYAN WALSH - Muslin Backgrounds PAGE 12: MIGUEL QUILES - Painted Canvas Backgrounds
PAGE 14,15: RYAN WALSH - Collapsible Backgrounds PAGE 16: ROB LOPSHIRE - Translum PAGE 18: RYAN WALSH - Floor Drops PAGE 25-30: BRYAN BOSGAL - LED Lighting, Studio Equipment

SEAMLESS PAPER

Savage Widetone Seamless Background Paper has been the professional photographer's choice for over sixty years. Its high-quality, fine-tooth, non-reflective surface makes it ideal for photo and video backgrounds, retail displays, crafting, theater productions and decor. Savage Seamless Paper rolls are core-wound and wrapped in a plastic sleeve. Available in 65 vibrant colors and 4 standard sizes. Made in the USA.

FEATURES :

- Fine-tooth, non-reflective surface
- Cost-effective solution for seamless backgrounds
- 65 Vibrant colors
- Acid-free and core-wound for longevity
- Paper density: 145 – 180 GSM
- Interior core diameter: 2.125"
- 100% Recyclable



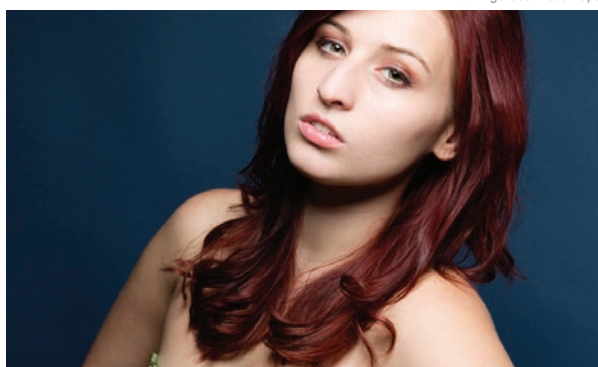
Although every effort was made to ensure accurate color reproduction, some variation may occur. For accurate color reproduction request a Savage Seamless Background Paper Color Swatch Chart.



Orchid Seamless Paper



Flamingo Seamless Paper



Ultramarine Seamless Paper

WIDETONE®
 Seamless Background Paper

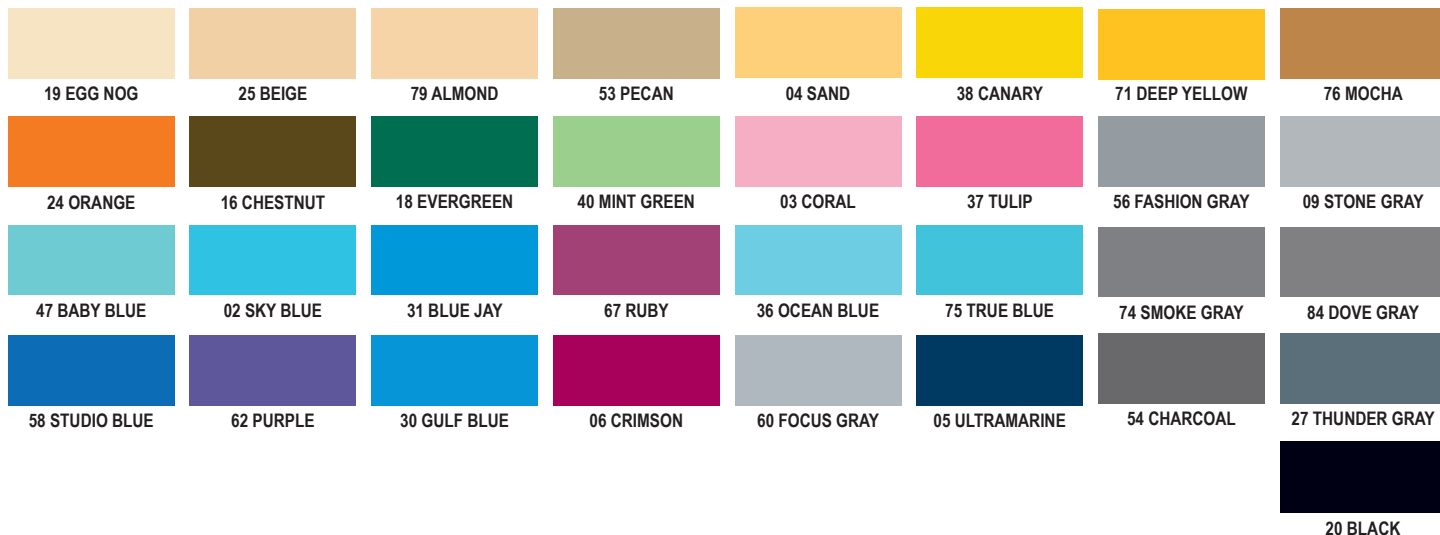
	107" x 12 yds (2.72m x 11m)	53" x 12 yds (1.35m x 11m)	107" x 50 yds (2.72m x 45.7m)	26" x 12 yds (66cm x 11m)
01 SUPER WHITE	01-12	01-1253	01-50	01-2612
02 SKY BLUE	02-12	02-1253	02-50	02-2612
03 CORAL	03-12	03-1253	03-50	03-2612
04 SAND	04-12	04-1253	04-50	04-2612
05 ULTRAMARINE	05-12	05-1253	05-50	05-2612
06 CRIMSON	06-12	06-1253	06-50	06-2612
08 PRIMARY RED	08-12	08-1253	08-50	08-2612
09 STONE GRAY	09-12	09-1253	09-50	09-2612
12 STUDIO GRAY	12-12	12-1253	12-50	12-2612
14 GRAY SKY	14-12	14-1253	14-50	14-2612
15 SUEDE GRAY	15-12	15-1253	15-50	15-2612
16 CHESTNUT	16-12	16-1253	16-50	16-2612
18 EVERGREEN	18-12	18-1253	18-50	18-2612
19 EGG NOG	19-12	19-1253	19-50	19-2612
20 BLACK	20-12	20-1253	20-50	20-2612
22 EGG SHELL	22-12	22-1253	22-50	22-2612
24 ORANGE	24-12	24-1253	24-50	24-2612
25 BEIGE	25-12	25-1253	25-50	25-2612
26 SLATE GRAY	26-12	26-1253	26-50	26-2612
27 THUNDER GRAY	27-12	27-1253	27-50	27-2612
29 ORCHID	29-12	29-1253	29-50	29-2612
30 GULF BLUE	30-12	30-1253	30-50	30-2612
31 BLUE JAY	31-12	31-1253	31-50	31-2612
32 LIGHT GRAY	32-12	32-1253	32-50	32-2612
34 OLIVE GREEN	34-12	34-1253	34-50	34-2612
35 HOLLY	35-12	35-1253	35-50	35-2612
36 OCEAN BLUE	36-12	36-1253	36-50	36-2612
37 TULIP	37-12	37-1253	37-50	37-2612
38 CANARY	38-12	38-1253	38-50	38-2612
40 MINT GREEN	40-12	40-1253	40-50	40-2612
41 BLUEMIST	41-12	41-1253	41-50	41-2612
43 MARMALADE	43-12	43-1253	43-50	43-2612
46 TECH GREEN	46-12	46-1253	46-50	46-2612
47 BABY BLUE	47-12	47-1253	47-50	47-2612
50 WHITE	50-12	50-1253	50-50	50-2612
51 BONE	51-12	51-1253	51-50	51-2612
53 PECAN	53-12	53-1253	53-50	53-2612
54 CHARCOAL	54-12	54-1253	54-50	54-2612
56 FASHION GRAY	56-12	56-1253	56-50	56-2612
57 GRAY TINT	57-12	57-1253	57-50	57-2612
58 STUDIO BLUE	58-12	58-1253	58-50	58-2612
60 FOCUS GRAY	60-12	60-1253	60-50	60-2612
61 TV GRAY	61-12	61-1253	61-50	61-2612
62 PURPLE	62-12	62-1253	62-50	62-2612
63 IVORY	63-12	63-1253	63-50	63-2612
64 BLUE JEAN	64-12	64-1253	64-50	64-2612
65 REGAL BLUE	65-12	65-1253	65-50	65-2612
66 PURE WHITE	66-12	66-1253	66-50	66-2612
67 RUBY	67-12	67-1253	67-50	67-2612
68 TEAL	68-12	68-1253	68-50	68-2612
70 STORM GRAY	70-12	70-1253	70-50	70-2612
71 DEEP YELLOW	71-12	71-1253	71-50	71-2612
74 SMOKE GRAY	74-12	74-1253	74-50	74-2612
75 TRUE BLUE	75-12	75-1253	75-50	75-2612
76 MOCHA	76-12	76-1253	76-50	76-2612
79 ALMOND	79-12	79-1253	79-50	79-2612
80 COCOA	80-12	80-1253	80-50	80-2612
81 RUSTIC	81-12	81-1253	81-50	81-2612
82 TANGELO	82-12	82-1253	82-50	82-2612
83 TURQUOISE	83-12	83-1253	83-50	83-2612
84 DOVE GRAY	84-12	84-1253	84-50	84-2612
90 SOFT GRAY	90-12	90-12 53	90-50	90-2612
91 PLUM	91-12	91-1253	91-50	91-2612
92 FLAMINGO	92-12	92-1253	92-50	92-2612
93 LEMONADE	93-12	93-1253	93-50	93-2612

 MID-SIZE
 86" x 12 yds
 (2.18m x 11m)

 EXTRA-WIDE
 140" x 35 yds
 (3.56m x 32m)

 01 SUPER WHITE
 20 BLACK
 46 TECH GREEN
 70 STORM GRAY

 01-86
 20-86
 46-86
 70-86

 1-140
 20-140
 46-140
 70-140


20 BLACK

PRINTED PAPER BACKGROUNDS

Our continuous rolls of printed paper backgrounds are produced with state-of-the-art, high-definition printers, creating unique and realistic backgrounds that photograph beautifully. Offered in a variety of designs from wood, brick, bokeh and more, Savage Printed Background Paper brings versatility, elegance and fun to portrait sessions, celebrations and photo booths. Our printed background paper is core-wound for easy hanging and available in a convenient 53" x 18' (1.35m x 5.5m) size.

FEATURES :

- Fine-tooth, non-reflective surface
- Economical
- Vibrant patterns & realistic textures
- Paper density: 180 GSM
- Acid-free and core-wound for longevity
- Interior core diameter: 2.125"
- Convenient 53" x 18' size (1.35m x 5.5m)
- Patterns are continuous along entire roll
- 100% Recyclable



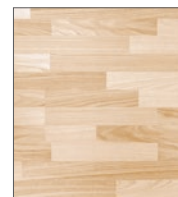
WORN PLANKS
P-PA5318WRN



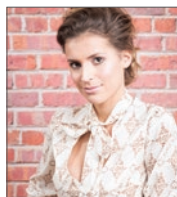
GRAY PINE
P-PA5318GRP



WHITEWASH
P-PA5318WHW



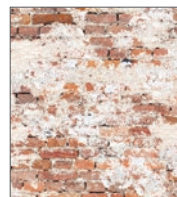
PALE WASHED WOOD
P-PA5318PWW



RED BRICK
P-PA5318RBR



GRUNGE BRICK
P-PA5318GBR



WEATHERED BRICK
P-PA5318WBR



WHITE BRICK
P-PA5318WTB



GRAY & WHITE CHEVRON
P-PA5318GWC



PARTY BANNERS
P-PA5318PBA



GRAY FLORAL
P-PA5318GFL



RED & WHITE CHEVRON
P-PA5318RWC



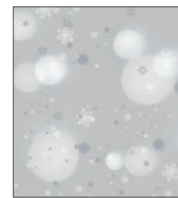
DEEP BLUE HAZE
P-PA5318BH2



CELEBRATION LIGHTS
P-PA5318CBL



IVORY GLOW
P-PA5318IVG



WINTER FROST
P-PA5318WFR



ROSY POLKA DOTS
P-PA5318RPO



AQUA POLKA DOTS
P-PA5318APO



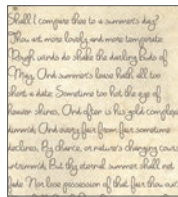
RAINBOW SPRINKLE
P-PA5318RSP



FLOATING HEARTS
P-PA5318FLH



CONGRATULATIONS
P-PA5318CON



ROMANTIC SCRIPT
P-PA5318ROS



LOVE BURST
P-PA5318LOB



VINTAGE FLORAL
P-PA5318VFL

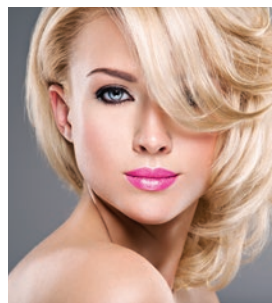
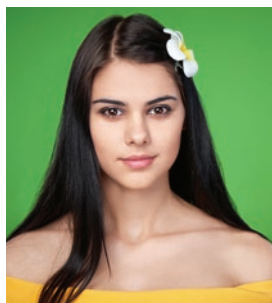
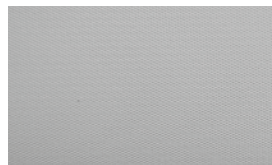
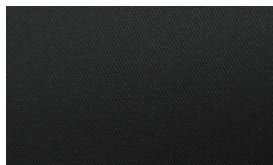
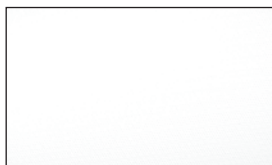
VINYL BACKGROUNDS

Savage Infinity Vinyl Backgrounds are the finest vinyl on the market. Their unique matte finish allows for a glare-free background. Ideal for all portrait and commercial photography. Infinity Vinyl Backgrounds are available in rolls on strong cores and can be used with most background support systems. For larger sizes, we recommend our Aluminum Core accessory for added stability and to reduce sagging (pg. 33).

FEATURES :

- Matte finish - no glare
- Professional quality, durable vinyl
- Easily clean soil marks with a damp sponge
- Ideal for high key photography (white)
- Rolls are on sturdy cores to prevent wrinkles

SOLID COLOR VINYL BACKGROUNDS



PURE WHITE

5' x 7' (1.52m x 2.13m)	V01-0507
8' x 10' (2.43m x 3.04m)	V01-0810
8' x 20' (2.43m x 6.09m)	V01-0820
9' x 10' (2.75m x 3.04m)	V01-0910
9' x 20' (2.75m x 6.09m)	V01-0920
10' x 10' (3.04m x 3.04m)	V01-1010
10' x 20' (3.04m x 6.09m)	V01-1020

MATTE BLACK

5' x 7' (1.52m x 2.13m)	V20-0507
8' x 10' (2.43m x 3.04m)	V20-0810
8' x 20' (2.43m x 6.09m)	V20-0820
9' x 10' (2.75m x 3.04m)	V20-0910
9' x 20' (2.75m x 6.09m)	V20-0920
10' x 10' (3.04m x 3.04m)	V20-1010
10' x 20' (3.04m x 6.09m)	V20-1020

CHROMA GREEN

5' x 7' (1.52m x 2.13m)	V46-0507
8' x 10' (2.43m x 3.04m)	V46-0810
8' x 20' (2.43m x 6.09m)	V46-0820
9' x 10' (2.75m x 3.04m)	V46-0910
9' x 20' (2.75m x 6.09m)	V46-0920
10' x 10' (3.04m x 3.04m)	V46-1010
10' x 20' (3.04m x 6.09m)	V46-1020

PHOTO GRAY

5' x 7' (1.52m x 2.13m)	V70-0507
8' x 10' (2.43m x 3.04m)	V70-0810
8' x 20' (2.43m x 6.09m)	V70-0820
9' x 10' (2.75m x 3.04m)	V70-0910
9' x 20' (2.75m x 6.09m)	V70-0920
10' x 10' (3.04m x 3.04m)	V70-1010
10' x 20' (3.04m x 6.09m)	V70-1020

VINYL KITS

INCLUDE PORT-A-STAND AND 5' x 12' VINYL

WHITE VINYL KIT	62037-0512
BLACK VINYL KIT	62037-2012
GREEN VINYL KIT	62037-4612
GRAY VINYL KIT	62037-7012

PRINTED VINYL BACKGROUNDS



Savage's new line of Printed Vinyl is perfect for photographers who want to switch out their background options, constantly offering new and creative set designs to their studio clients. With over 120 unique styles available now, and, these lightweight, glare-free backgrounds are conveniently sized to 5' x 7' (1.52m x 2.13m), and core-wound for longevity, making them ideal for baby, kid and senior portrait sessions.



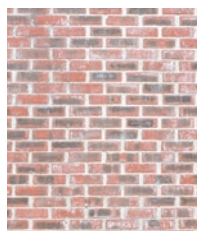
PLASTERED RED BRICK
P-VL710



WEATHERED BRICK WALL
P-VL712



SMOKY BRICK
P-VL714



RED BRICK WALL
P-VL716



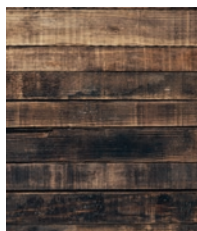
WHITE BRICK
P-VL722



BRICK & CEMENT WALL
P-VL718



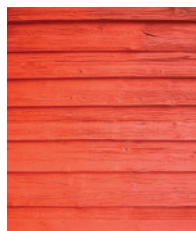
GRUNGE BRICK
P-VL720



WORN BROWN WOOD
P-VL700



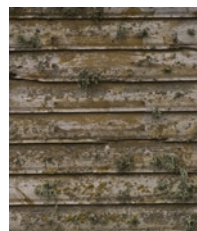
WORN WHITE WOOD
P-VL702



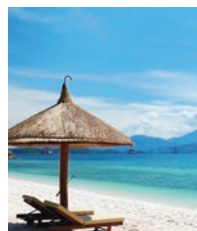
RED BARN WALL
P-VL704



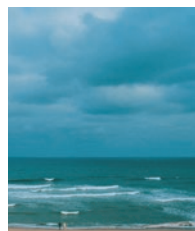
RUSTIC TEAL WOOD
P-VL706



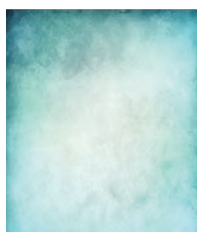
DISTRESSED WOOD WALL
P-VL708



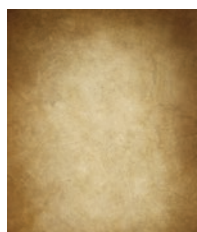
TROPICAL BEACH
P-VL848



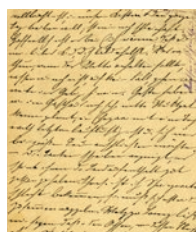
SURF BEACH
P-VL844



BLUE WATERCOLOR
P-VL728



TEXTURED BROWN
P-VL730



VINTAGE SCRIPT
P-VL732



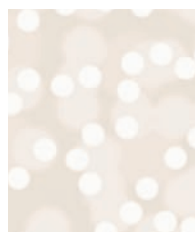
PINK DAMASK
P-VL734



PURPLE DAMASK
P-VL736



HAZY PURPLE FLORAL
P-VL738



IVORY GLOW
P-VL762



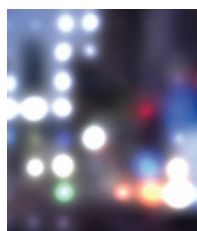
BUBBLEGUM BOKEH
P-VL748



GOLDEN PARTY LIGHTS
P-VL750



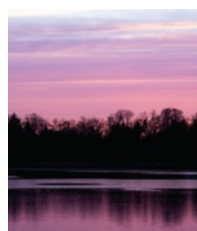
GOLD BOKEH
P-VL752



BLURRED CITY LIGHTS
P-VL754



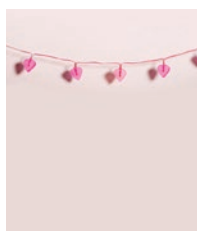
BLURRED STREET LIGHTS
P-VL758



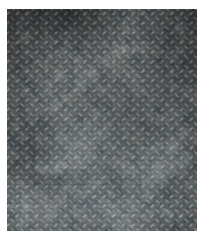
LAVENDER LAKE
P-VL834



VINTAGE FLORAL GARLAND
P-VL740



PINK HEARTS BUNTING
P-VL794



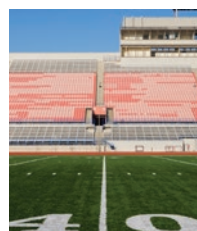
DIAMOND PLATE
P-VL884



BLOOMING FLOWERS
P-VL814



SCHOOL DESK
P-VL892



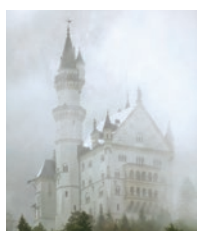
FOOTBALL FIELD
P-VL928



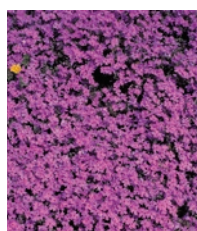
CRACKED STONE WALL
P-VL880



CLOUDY BLUE SKY
P-VL888



CASTLE IN THE FOG
P-VL860



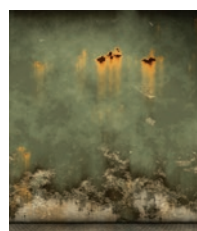
PURPLE FLOWER BED
P-VL822



AMERICAN FLAG
P-VL802



STADIUM LIGHTS
P-VL924



GRUNGE FACTORY
P-VL878



BEACH SUNSET
P-VL836



NIGHT BLUE WOODS
P-VL896

VIEW [ALL PRINTED VINYL DESIGNS AT SAVAGEUNIVERSAL.COM](http://SAVAGEUNIVERSAL.COM)

MUSLIN BACKGROUNDS

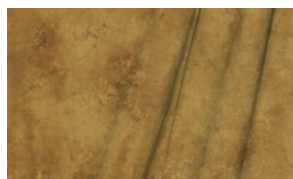
Savage Muslin Backgrounds are perfect for traditional and fine-art portraits or unique commercial projects. Photographers turn to Muslin when looking to create a professional look with minimal effort. Savage Muslins are seamless, come equipped with a 3" rod pocket and are carefully sewn on all sides for durability and superior visual appeal. Made from 100% cotton material that is easy to clean, store and transport.

FEATURES :

- Heavy-duty 100% cotton
- Seamless, made from one piece of material
- 3" Rod pocket for quick hanging
- Sewn finish on all four sides
- Carry bag included
- Easy to clean with a damp sponge
- Glare-free, matte finish

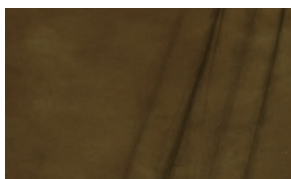
HAND PAINTED MUSLIN BACKGROUNDS

Infinity Hand-Painted Muslin Backgrounds are produced with a special multi-layered painting process to provide a unique, rich look with Old World style. Kit option includes Port-a-Stand (pg. 28).



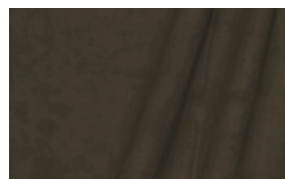
OLYMPIA

10' x 10' (3.04m x 3.04m) 406004-1010
10' x 20' (3.04m x 6.09m) 406004-1020
KIT 62037-0420



VERONA

10' x 10' (3.04m x 3.04m) 406018-1010
10' x 20' (3.04m x 6.09m) 406018-1020
KIT 62037-1820



BOGATA

10' x 10' (3.04m x 3.04m) 406024-1010
10' x 20' (3.04m x 6.09m) 406024-1020
KIT 62037-2420



VENUS

10' x 10' (3.04m x 3.04m) 406026-1010
10' x 20' (3.04m x 6.09m) 406026-1020
KIT 62037-2620



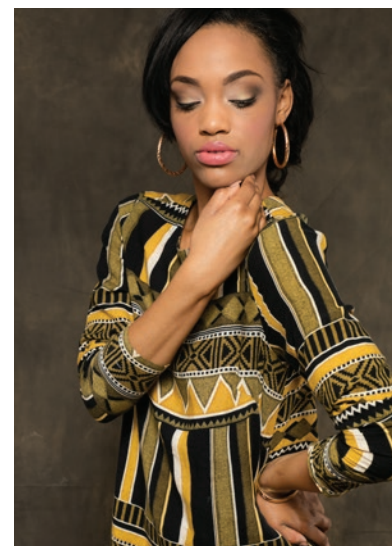
MILANO

10' x 10' (3.04m x 3.04m) 406030-1010
10' x 20' (3.04m x 6.09m) 406030-1020
KIT 62037-3020



PETRA

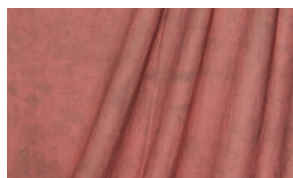
10' x 10' (3.04m x 3.04m) 406010-1010
10' x 20' (3.04m x 6.09m) 406010-1020
KIT 62037-1020



Bogata Hand Painted Muslin

CRUSHED MUSLIN BACKGROUNDS

Accent Crushed Muslin Backgrounds are dyed and crushed to create a distinct mottled appearance.



SEDONA RED

10' x 12' (3.04m x 3.65m) CM0112
10' x 24' (3.04m x 7.31m) CM0124



BLUE WINTER

10' x 12' (3.04m x 3.65m) CM0212
10' x 24' (3.04m x 7.31m) CM0224



MOCHA BISQUE

10' x 12' (3.04m x 3.65m) CM0312
10' x 24' (3.04m x 7.31m) CM0324



GRAY SKIES

10' x 12' (3.04m x 3.65m) CM0412
10' x 24' (3.04m x 7.31m) CM0424



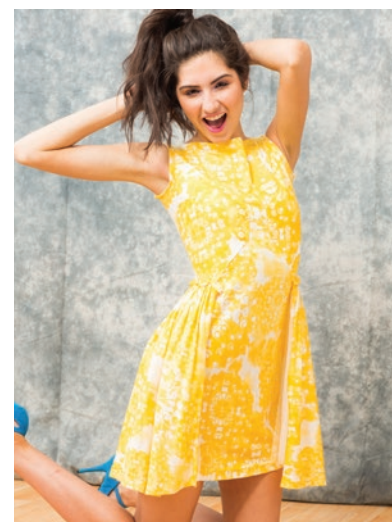
AUTUMN BROWN

10' x 12' (3.04m x 3.65m) CM0512
10' x 24' (3.04m x 7.31m) CM0524



APEX BLUE

10' x 12' (3.04m x 3.65m) CM0612
10' x 24' (3.04m x 7.31m) CM0624



Gray Skies Crushed Muslin

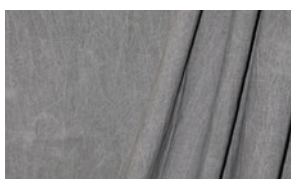
WASHED MUSLIN BACKGROUNDS

Accent Washed Muslin Backgrounds are dyed and washed for subtle blended appearance.



SKY BLUE

10' x 12' (3.04m x 3.65m) WD5012
10' x 24' (3.04m x 7.31m) WD5024



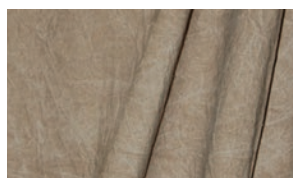
LIGHT GRAY

10' x 12' (3.04m x 3.65m) WD5112
10' x 24' (3.04m x 7.31m) WD5124



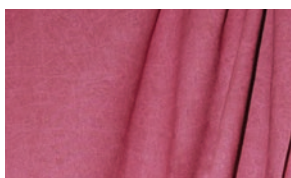
FOREST GREEN

10' x 12' (3.04m x 3.65m) WD5212
10' x 24' (3.04m x 7.31m) WD5224



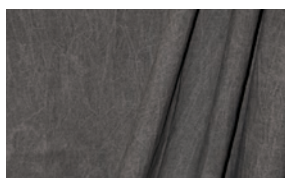
BROWN

10' x 12' (3.04m x 3.65m) WD5312
10' x 24' (3.04m x 7.31m) WD5324



CRANBERRY

10' x 12' (3.04m x 3.65m) WD5412
10' x 24' (3.04m x 7.31m) WD5424



DARK GRAY

10' x 12' (3.04m x 3.65m) WD5512
10' x 24' (3.04m x 7.31m) WD5524



Cranberry Washed Muslin

PAINTED CANVAS NEW

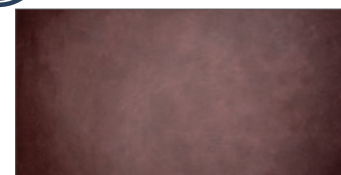
Timeless Textures canvas backdrops

A collection of hand-painted canvas backgrounds for fine-art photographers.

We are proud to debut the new Savage Timeless Textures Canvas Photography Backgrounds to you this year! Durable and thick canvas is hand-painted in various deep, rich hues for a totally timeless, artfully textured photo background that is ideal for creating elegant and fine-art portraiture. The hand-painting process offers a one-of-a-kind design from piece to piece where photographers can create a high quality, custom styled set at a very affordable price.

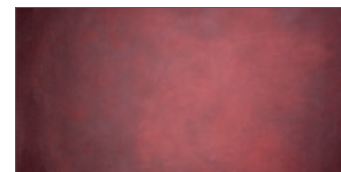
FEATURES :

- Heavy cotton canvas
- Mounted to aluminum core
- Wood trim counterweight attached at bottom
- Mount to crossbar or light stand
- Spot clean lightly with damp sponge



MARSALA

5' x 7' (1.52m x 2.13m) CP500-0507
8' x 12' (2.43m x 3.65m) CP500-0812



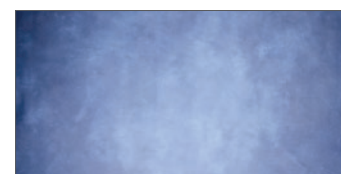
SCARLET

5' x 7' (1.52m x 2.13m) CP502-0507
8' x 12' (2.43m x 3.65m) CP502-0812



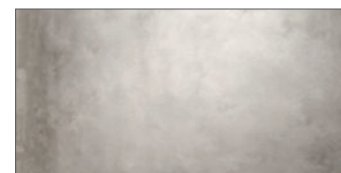
ALPINE

5' x 7' (1.52m x 2.13m) CP504-0507
8' x 12' (2.43m x 3.65m) CP504-0812



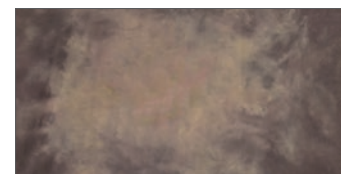
MIDNIGHT

5' x 7' (1.52m x 2.13m) CP505-0507
8' x 12' (2.43m x 3.65m) CP505-0812



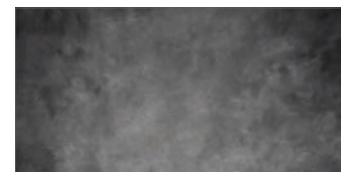
ASH

5' x 7' (1.52m x 2.13m) CP508-0507
8' x 12' (2.43m x 3.65m) CP508-0812



DESERT

5' x 7' (1.52m x 2.13m) CP510-0507
8' x 12' (2.43m x 3.65m) CP510-0812

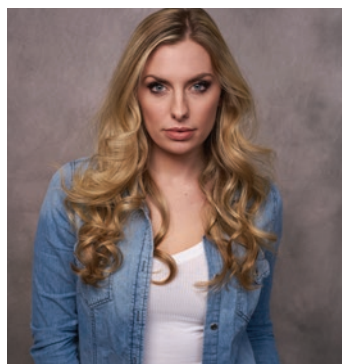


ECLIPSE

5' x 7' (1.52m x 2.13m) CP512-0507
8' x 12' (2.43m x 3.65m) CP512-0812



Midnight Painted Canvas



Ash Painted Canvas



Desert Painted Canvas

SOLID BACKGROUNDS

Savage Solid Muslin Backgrounds are perfect for dramatic portraits and unique commercial projects, and are made with high quality cotton material to ensure that you get the most professional and durable background available.



HEAVY WEIGHT

PRO WHITE MUSLIN

10' x 10' (3.04m x 3.04m) CL01-1010
10' x 20' (3.04m x 6.09m) CL01-1020

PRO BLACK MUSLIN

10' x 10' (3.04m x 3.04m) CL20-1010
10' x 20' (3.04m x 6.09m) CL20-1020

PRO CHROMA GREEN MUSLIN

10' x 10' (3.04m x 3.04m) CL46-1010
10' x 20' (3.04m x 6.09m) CL46-1020

PRO GRAY MUSLIN

10' x 10' (3.04m x 3.04m) CL12-1010
10' x 20' (3.04m x 6.09m) CL12-1020

STANDARD WEIGHT

SOLID WHITE MUSLIN

10' x 12' (3.04m x 3.65m) SD0112
10' x 24' (3.04m x 7.31m) SD0124

SOLID BLACK MUSLIN

10' x 12' (3.04m x 3.65m) SD2012
10' x 24' (3.04m x 7.31m) SD2024

SOLID CHROMA GREEN MUSLIN

10' x 12' (3.04m x 3.65m) SD4612
10' x 24' (3.04m x 7.31m) SD4624

SOLID GRAY MUSLIN

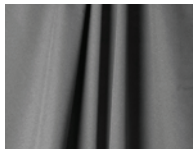
10' x 12' (3.04m x 3.65m) SD1212
10' x 24' (3.04m x 7.31m) SD1224

WRINKLE-RESISTANT SOLID ECONOMY BACKGROUNDS

Ideal for students, part-time photographers, or anyone needing a durable, easy-to-use background setup that's budget friendly too. Savage 5'x 9' Polyester Wrinkle-Resistant Backgrounds are offered in a variety of vivid and eye-catching colors, and have sewn-in rod pockets for quick and easy hanging.



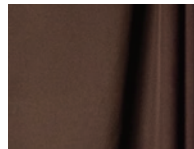
WHITE
5' x 9' (1.52m x 2.74m)
01-59



GRAY
5' x 9' (1.52m x 2.74m)
12-59



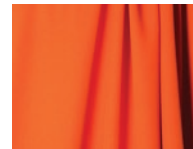
BLACK
5' x 9' (1.52m x 2.74m)
20-59



CHOCOLATE
5' x 9' (1.52m x 2.74m)
30-59



LEMON
5' x 9' (1.52m x 2.74m)
31-59



TANGERINE
5' x 9' (1.52m x 2.74m)
32-59



PASSION PINK
5' x 9' (1.52m x 2.74m)
33-59



CARDINAL RED
5' x 9' (1.52m x 2.74m)
34-59



JADE
5' x 9' (1.52m x 2.74m)
35-59



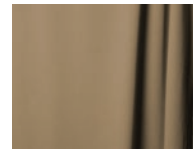
POWDER BLUE
5' x 9' (1.52m x 2.74m)
36-59



COBALT BLUE
5' x 9' (1.52m x 2.74m)
37-59



GRAPE
5' x 9' (1.52m x 2.74m)
38-59



RATTAN
5' x 9' (1.52m x 2.74m)
39-59



GREEN
5' x 9' (1.52m x 2.74m)
46-59

SOLID MUSLIN BACKGROUND KITS

Savage Standard Weight Solid Muslin Background Kits include a variety of classic background color and size options and the Savage Port-a-Stand (pg. 28) for added versatility and mobility. This three piece stand is ideal for supporting up to any 10' (3.04m) background on location.



WHITE KIT

10' x 12' (3.04m x 3.65m) 01PAS-12
10' x 24' (3.04m x 7.31m) 01PAS-24



GREEN KIT

10' x 12' (3.04m x 3.65m) 46PAS-12
10' x 24' (3.04m x 7.31m) 46PAS-24



BLACK / WHITE KIT

10' x 12' (3.04m x 3.65m) 0120PAS-12
10' x 24' (3.04m x 7.31m) 0120PAS-24



BLACK/WHITE/GREEN KIT

10' x 12' (3.04m x 3.65m) 012046PAS-12
10' x 24' (3.04m x 7.31m) 012046PAS-24

BLACK KIT

10' x 12' (3.04m x 3.65m) 20PAS-12
10' x 24' (3.04m x 7.31m) 20PAS-24

GRAY KIT

10' x 12' (3.04m x 3.65m) 12PAS-12
10' x 24' (3.04m x 7.31m) 12PAS-24

BLACK / WHITE / GRAY KIT

10' x 12' (3.04m x 3.65m) 011220PAS-12
10' x 24' (3.04m x 7.31m) 011220PAS-24

WRINKLE-RESISTANT SOLID ECONOMY BACKGROUNDS KITS

These Economy Background Kits feature 1,2 or 3 wrinkle-resistant, polyester backgrounds sized to 5' x 9' (1.52m x 2.74m), and a portable, Economy Background stand with carry bag (pg. 28) for easy set up & mobility. Stand features quality spring clamps for simple raising & lowering of the backdrop crossbar.



WHITE KIT
5' x 9' (1.52m x 2.74m)
59-9901



BLACK KIT
5' x 9' (1.52m x 2.74m)
59-9920



GRAY KIT
5' x 9' (1.52m x 2.74m)
59-9912



GREEN KIT
5' x 9' (1.52m x 2.74m)
59-9946



WHITE/BLK KIT
(2) 5' x 9' (1.52m x 2.74m)
59-990120



BLK/WHT/GRY KIT
(3) 5' x 9' (1.52m x 2.74m)
59-99011220



BLK/WHT/GRN KIT
(3) 5' x 9' (1.52m x 2.74m)
59-99012046

COLLAPSIBLE BACKGROUNDS

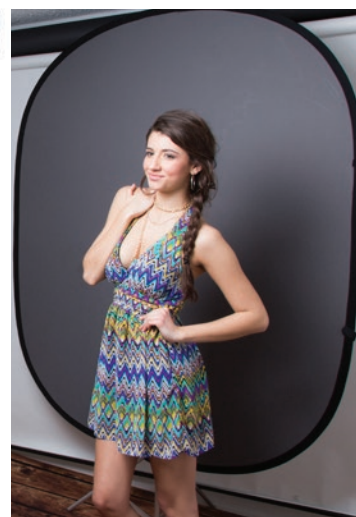
Portable, compact, and simple to set up and take down, Savage Collapsible Backgrounds are an ideal choice for photographers looking for a versatile backdrop that easily makes the transition from studio to location. Our collapsible backgrounds spring open, attach to stands with a support clip, and many can be used horizontally or vertically. They collapse to 1/3 their original size for quick and easy transport in a zippered carry bag (included). Also available as a collapsible background kit, including an 8' background stand and support clip.

FEATURES :

- Reversible - two backgrounds in one
- 5' x 6' Collapses to just 26" (66cm)
- 5' x 7' Collapses to just 28" (71cm)
- 6' x 7' Collapses to just 32" (81cm)
- Easy setup & take down
- Velcro loops allow for vertical or horizontal use
- 100% Cotton
- Carry bag included
- Kit option includes 8' aluminum stand & support clip



Spring Essence Collapsible



Dark / Light Gray Collapsible



White Brick Collapsible

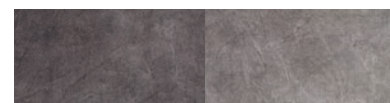
REVERSIBLE MUSLIN & SOLID COLOR COLLAPSIBLE BACKGROUNDS



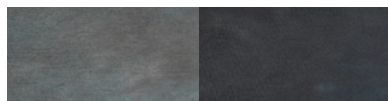
ROYAL TONE
5' x 6' (1.52m x 1.83m)
5' x 6' KIT WITH STAND CB100
CB100-KIT



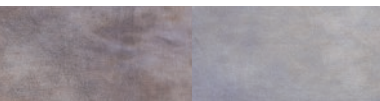
LAKESIDE
5' x 6' (1.52m x 1.83m)
5' x 6' KIT WITH STAND CB102
CB102-KIT



MONSOON
5' x 6' (1.52m x 1.83m)
5' x 6' KIT WITH STAND CB104
CB104-KIT



INDIGO NIGHTS
5' x 6' (1.52m x 1.83m)
5' x 6' KIT WITH STAND CB106
CB106-KIT



SPRING ESSENCE
5' x 6' (1.52m x 1.83m)
5' x 6' KIT WITH STAND CB108
CB108-KIT



EARTH TONE
5' x 6' (1.52m x 1.83m)
5' x 6' KIT WITH STAND CB110
CB110-KIT



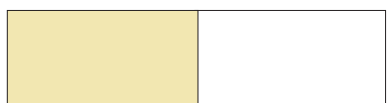
BLACK / WHITE
5' x 6' (1.52m x 1.83m)
5' x 6' KIT WITH STAND CB112
CB112-KIT
6' x 7' (1.83m x 2.13m) CB112-67



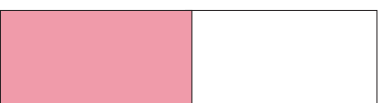
DARK / LIGHT GRAY
5' x 6' (1.52m x 1.83m)
5' x 6' KIT WITH STAND CB114
CB114-KIT
6' x 7' (1.83m x 2.13m) CB114-67



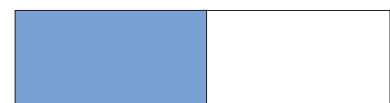
CHROMA GREEN / BLUE
5' x 6' (1.52m x 1.83m)
5' x 6' KIT WITH STAND CB116
CB116-KIT
6' x 7' (1.83m x 2.13m) CB116-67



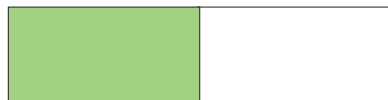
CREAM / WHITE
5' x 6' (1.52m x 1.83m)
5' x 6' KIT WITH STAND CB150
CB150-KIT



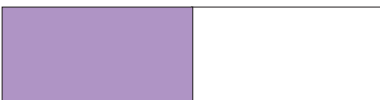
LIGHT PINK / WHITE
5' x 6' (1.52m x 1.83m)
5' x 6' KIT WITH STAND CB152
CB152-KIT



LIGHT BLUE / WHITE
5' x 6' (1.52m x 1.83m)
5' x 6' KIT WITH STAND CB154
CB154-KIT



LIGHT GREEN / WHITE
5' x 6' (1.52m x 1.83m)
5' x 6' KIT WITH STAND CB156
CB156-KIT



LIGHT PURPLE / WHITE
5' x 6' (1.52m x 1.83m)
5' x 6' KIT WITH STAND CB158
CB158-KIT



MATADOR RED / WHITE
5' x 6' (1.52m x 1.83m)
5' x 6' KIT WITH STAND CB160
CB160-KIT



NAVY / WHITE
5' x 6' (1.52m x 1.83m)
5' x 6' KIT WITH STAND CB162
CB162-KIT



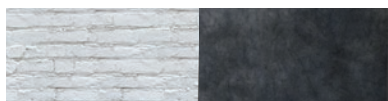
TEAL / WHITE
5' x 6' (1.52m x 1.83m)
5' x 6' KIT WITH STAND CB164
CB164-KIT

KIT OPTION INCLUDES
8' ALUMINUM STAND

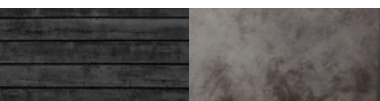


GRUNGE *Classics* **NEW**

REVERSIBLE – GO FROM GRUNGE TO CLASSIC WITH ONE BACKGROUND



WHITE BRICK / MOTTLED DARK GRAY
5' x 7' (1.52m x 2.13m)
5' x 7' KIT WITH STAND CB180
CB180-KIT



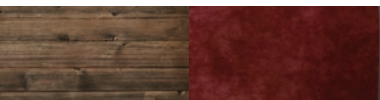
DARK PLANKS / MOTTLED LIGHT GRAY
5' x 7' (1.52m x 2.13m)
5' x 7' KIT WITH STAND CB182
CB182-KIT



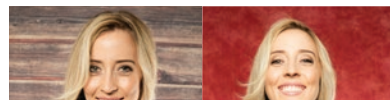
WEATHERED BRICK / MOTTLED BLACK
5' x 7' (1.52m x 2.13m)
5' x 7' KIT WITH STAND CB184
CB184-KIT



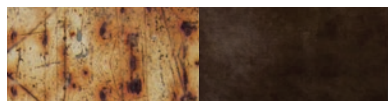
GRAY PINE / MOTTLED BLUE
5' x 7' (1.52m x 2.13m)
5' x 7' KIT WITH STAND CB186
CB186-KIT



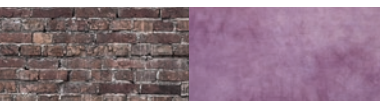
RUSTIC PLANKS / MOTTLED RED
5' x 7' (1.52m x 2.13m)
5' x 7' KIT WITH STAND CB188
CB188-KIT



FRONT:
UNIQUE PRINTED DESIGN



INDUSTRIAL GRUNGE / MOTTLED BROWN
5' x 7' (1.52m x 2.13m)
5' x 7' KIT WITH STAND CB190
CB190-KIT



GRUNGE BRICK / MOTTLED PURPLE
5' x 7' (1.52m x 2.13m)
5' x 7' KIT WITH STAND CB192
CB192-KIT



REVERSE:
DYED MOTTLED TEXTURE

TRANSLUM™

Add the soft glow of frosted glass to images with Savage Translum™. Made from smooth, texture-free plastic, this versatile material can be used as a diffusion panel, light table, prop setup or portrait background. Subjects on the other side of the backdrop are seen as silhouette shapes. Try backlighting for an easy high-key setup.

Tabletop: Use Translum™ as a background for product and tabletop photography. Trim Translum™ to any size to fit your application.

Diffuser: Diffuse studio lighting with Translum™ to achieve soft, delicate light, or suspend near windows to easily diffuse natural light.

Silhouettes & Patterns: Get creative! Translum™ allows you to transform light and shadow like a pro. Have fun with silhouettes, or trim Translum™ to make your own cookaloris!

FEATURES :

- Sturdy, durable plastic material
- Specialized effect of frosted glass
- Easily cut with scissors for added creativity
- Ideal for silhouettes & backlighting
- Inside core diameter: 2.125"
- Easily wipes clean after food & drink shoots



IDEAL FOR SILHOUETTES



HIGH-KEY BACKGROUNDS



TABLETOP & DIFFUSION

HEAVY WEIGHT TRANSLUM

54" x 18' ROLL (1.37m x 5.49m) F-STOP/LIGHT LOSS: 2
55418

MEDIUM WEIGHT TRANSLUM

60" x 18' ROLL (1.52m x 5.49m) F-STOP/LIGHT LOSS: 1.5
46018

LIGHT WEIGHT TRANSLUM

60" x 18' ROLL (1.52M X 5.49M) F-STOP/LIGHT LOSS: 3/4
36018

SHEET VARIETY PACK

12" x 12" SHEETS (30.5cm x 30.5cm) VARIETY - 2 OF EACH WEIGHT
TL1212-PK



GREEN SCREENS

GREEN SCREEN SOFTWARE & KITS



GREEN SCREEN SOFTWARE

Our Green Screen Software Kit makes green screen magic a snap with our easy-to-use Green Screen Wizard Lite software, and includes access to an online image library of 3,500+ high resolution digital backgrounds. This software can be used with any green screen backdrop. A great introduction to chroma key technology.

INCLUDES:

- Green Screen Wizard Software (PC/Mac)
- Access to image library featuring 3,500+ high-resolution background images

DBK720

**PURCHASE ANY
GREEN SCREEN**

SOFTWARE OR KIT & GET

**UNLIMITED
ACCESS TO**

3,500+ IMAGE

**EXCLUSIVE
ONLINE GALLERY**



GREEN SCREEN PHOTO CREATOR KIT

KIT INCLUDES:

- Green Screen Wizard Software (PC/Mac)
- 5' x 7' (1.52m x 2.13m) Green Screen Muslin
- Removable hooks for hanging Green Screen
- Access to library featuring 3,500+ images

DBSK100



GREEN SCREEN DIGITAL PHOTOGRAPHY KIT

KIT INCLUDES:

- Green Screen Wizard Software (PC/Mac)
- 5'x6' (1.52m x 1.83m) Collapsible Green Screen
- 8' (2.43m) Aluminum background stand
- Access to library featuring 3,500+ images

DPK100

GREEN SCREEN BACKGROUNDS



SEAMLESS PAPER

#46 Tech Green

See page 5 for part numbers



VINYL GREEN SCREEN

Non-glare finish

See page 9 for part numbers



MUSLIN & FABRIC

Solid colored

See page 13 for part numbers



COLLAPSIBLE

Sized to 5' x 6' or 6' x 7'

See page 15 for part numbers

GREEN SCREEN BODY SUIT

Designed for live-action chroma key work, our Green Screen Video Suit features a poly/lycra construction, mesh face for breathability and zippered closures on the back and wrists.



MEDIUM SUIT
VIDGSM
(UP TO 6' & 200LBS)



LARGE SUIT
VIDGSLG
(UP TO 6'4" & 240LBS)



GREEN SCREEN SHIRT
GSSHIRT
(LARGE)



GREEN SCREEN PANTS
GSPANTS
(LARGE)



GREEN SCREEN HOOD
GSHOOD

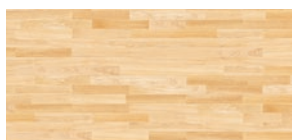
GREEN SCREEN GLOVES
GSGLOVES

FLOOR DROPS

Savage Floor Drops are the premium flooring solution for all studio photography. These extremely realistic floor drops photograph just like an authentic, textured floor, and are printed on a very durable, yet forgiving material for ultra comfort & believability.

FEATURES :

- Printed on thick, quality polyester material
- Durable, 1.5mm thick, non-slip rubber backing
- Mix & match for a complete studio setup
- Roll up for easy transport & storage
- Extremely realistic appearance
- Also, hang with clamps and use as a backdrop
- Available in 4' x 5', 5' x 7' & 8' x 8'



NATURAL BEECH

4' x 5' (1.2m X 1.5m) FD10045
5' x 7' (1.5m X 2.1m) FD10057
8' x 8' (2.4m X 2.4m) FD10088



RED OAK

4' x 5' (1.2m X 1.5m) FD10245
5' x 7' (1.5m X 2.1m) FD10257
8' x 8' (2.4m X 2.4m) FD10288



RUM OAK

4' x 5' (1.2m X 1.5m) FD10445
5' x 7' (1.5m X 2.1m) FD10457
8' x 8' (2.4m X 2.4m) FD10488



BRAZILIAN CHERRY

4' x 5' (1.2m X 1.5m) FD10645
5' x 7' (1.5m X 2.1m) FD10657
8' x 8' (2.4m X 2.4m) FD10688



HANDSCRAPED OAK

4' x 5' (1.2m X 1.5m) FD10845
5' x 7' (1.5m X 2.1m) FD10857
8' x 8' (2.4m X 2.4m) FD10888



AGED OAK

4' x 5' (1.2m X 1.5m) FD11045
5' x 7' (1.5m X 2.1m) FD11057
8' x 8' (2.4m X 2.4m) FD11088



GRAY PINE

4' x 5' (1.2m X 1.5m) FD11245
5' x 7' (1.5m X 2.1m) FD11257
8' x 8' (2.4m X 2.4m) FD11288



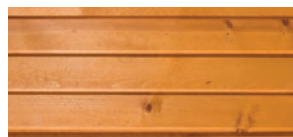
WEATHERED WOOD

4' x 5' (1.2m X 1.5m) FD11445
5' x 7' (1.5m X 2.1m) FD11457
8' x 8' (2.4m X 2.4m) FD11488



WHITEWASH

4' x 5' (1.2m X 1.5m) FD11645
5' x 7' (1.5m X 2.1m) FD11657
8' x 8' (2.4m X 2.4m) FD11688



LARGE PLANKS

4' x 5' (1.2m X 1.5m) FD11845
5' x 7' (1.5m X 2.1m) FD11857
8' x 8' (2.4m X 2.4m) FD11888



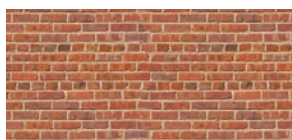
ANTIQUE PINE

4' x 5' (1.2m X 1.5m) FD12045
5' x 7' (1.5m X 2.1m) FD12057
8' x 8' (2.4m X 2.4m) FD12088



WORN PLANKS

4' x 5' (1.2m X 1.5m) FD12245
5' x 7' (1.5m X 2.1m) FD12257
8' x 8' (2.4m X 2.4m) FD12288

**RED BRICK**

4' x 5' (1.2m X 1.5m) FD12445
 5' x 7' (1.5m X 2.1m) FD12457
 8' x 8' (2.4m X 2.4m) FD12488

**AGED BRICK**

4' x 5' (1.2m X 1.5m) FD12645
 5' x 7' (1.5m X 2.1m) FD12657
 8' x 8' (2.4m X 2.4m) FD12688

**GRUNGE BRICK**

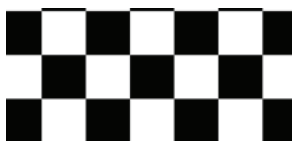
4' x 5' (1.2m X 1.5m) FD12845
 5' x 7' (1.5m X 2.1m) FD12857
 8' x 8' (2.4m X 2.4m) FD12888

**RUSTIC PAVERS**

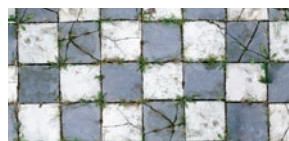
4' x 5' (1.2m X 1.5m) FD13045
 5' x 7' (1.5m X 2.1m) FD13057
 8' x 8' (2.4m X 2.4m) FD13088

**MOSAIC PAVERS**

4' x 5' (1.2m X 1.5m) FD13245
 5' x 7' (1.5m X 2.1m) FD13257
 8' x 8' (2.4m X 2.4m) FD13288

**CLASSIC TILE**

4' x 5' (1.2m X 1.5m) FD13445
 5' x 7' (1.5m X 2.1m) FD13457
 8' x 8' (2.4m X 2.4m) FD13488

**AGED PAVERS**

4' x 5' (1.2m X 1.5m) FD13645
 5' x 7' (1.5m X 2.1m) FD13657
 8' x 8' (2.4m X 2.4m) FD13688

**INDUSTRIAL GRUNGE**

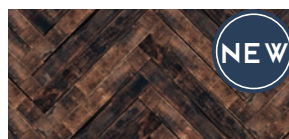
4' x 5' (1.2m X 1.5m) FD13845
 5' x 7' (1.5m X 2.1m) FD13857
 8' x 8' (2.4m X 2.4m) FD13888

**DIAMOND PLATE**

4' x 5' (1.2m X 1.5m) FD14045
 5' x 7' (1.5m X 2.1m) FD14057
 8' x 8' (2.4m X 2.4m) FD14088

**DISTRESSED TEAL WOOD**

4' x 5' (1.2m X 1.5m) FD14845
 5' x 7' (1.5m X 2.1m) FD14857
 8' x 8' (2.4m X 2.4m) FD14888

**HERRINGBONE WOOD**

4' x 5' (1.2m X 1.5m) FD15045
 5' x 7' (1.5m X 2.1m) FD15057
 8' x 8' (2.4m X 2.4m) FD15088

**DARK PLANKS**

4' x 5' (1.2m X 1.5m) FD15245
 5' x 7' (1.5m X 2.1m) FD15257
 8' x 8' (2.4m X 2.4m) FD15288



EQUIP

A bright, circular studio light is mounted on a black stand, positioned in the upper right quadrant of the frame. The light is turned on, creating a strong glow. The background is a solid, deep blue. On the far left, a person's hand is partially visible, holding a small object. The word 'MENT' is written in large, white, sans-serif capital letters across the middle of the image, with the 'M' and 'E' being slightly larger than the 'N' and 'T'.

MENT

STUDIO AND SPECIALTY PHOTOGRAPHY

It's not just what's in the back that counts. Build your photo studio with beautiful Savage backgrounds, efficient and cool-running LED lighting, multi-function equipment stands, an array of light modifiers and convenient storage accessories for a fully-functioning, professional studio that will impress any client.

We're proud to continue innovating within the LED lighting spectrum with new, powerful video lights, product photography light tables, and upgraded light tents.

Savage Background Stands continue to be reputed as the industry standard for backdrop support systems, spanning options for large commercial studios to portable on-location setups.

Explore our studio accessories for creative inspiration and get shooting!

LED LIGHTING

Make the transition to energy-efficient, long-lasting and high-quality LED lighting with ease with Savage's various lights and kit options. Whether you're always in the studio or need to pack up and travel easily with your gear, there's an ideal Savage LED lighting setup suited for every expertise and budget.



FEATURES :

- CRI: 85
- DB: 35
- Kelvin: 5600K
- Lumens at 1m: 13,000 w/ reflector
- Actual watts: 1000 per light
- Voltage: 100 - 240V

2000W LED LOCATION LIGHT KIT

Each of the two cool running Savage LED lights produce the equivalent of 1000 watts of incandescent light (13,000 lumens when included reflectors are used) while using only 100 watts of electricity and providing 50,000 hours of usage, eliminating the need for costly bulb replacement. The stepless power adjustment (0-99) with digital read out ensures output consistency, with minimal fluctuations in Kelvin temperature.

2000 WATT LED LOCATION LIGHT KIT
1000 WATT LED LIGHT HEAD ONLY

LED2000K
LED1000

KIT INCLUDES:

- (2) 1000W LED light heads
- (2) 8' Light stands
- (2) 7" Reflectors
- (2) AC Universal power cords
- (1) Heavy-duty rolling case



COBRA INTERVIEW LED LIGHT KIT

The Savage Cobra Interview Kit is designed with quick set up and break down in mind for the videographer on the go. The ultra thin, lightweight design includes 204 LED chips with adjustable temperature from 3200K to 5400K. The included NP-F750 Sony batteries provide 3 hour run time when used at full power, or use the 4.5' AC adapter power cord when a power source is available. This kit also includes three 7' Drop Stands® which use gravity to open and close automatically for easy repositioning when in tight spaces or crowded rooms, and the exclusive flex arm and counter weight system allows for unprecedented hair light control.

KIT INCLUDES:

- (3) 7' Drop Stands® (pg. 30)
- (3) Luminous Pro LED Video Lights
- (1) 40" Flexible Arm with adjustable shoe mount
- (1) Counter Balance with 1lb steel weight with locking clamp
- (1) Heavy-duty rolling case

COBRA INTERVIEW LED LIGHT KIT

INTV-3



40" FLEXIBLE ARM WITH ADJUSTABLE SHOE MOUNT FA-40

FLEXIBLE ARM INCLUDES MALE & FEMALE 1/4 20 THREADS FOR MOUNTING VERSATILITY



COUNTER BALANCE WITH 1LB STEEL WEIGHT CB-10

COUNTER BALANCE WEIGHT EXTENDS TO 25.5" FOR MAXIMUM WEIGHT OFFSET

FEATURES :

- CRI: 91
- DB: 0
- Kelvin: Adjustable from 3200K to 5400K
- Lumens at 1m: 1530 at 3200K or 5400K & 900 at 4200K
- Actual watts: 14
- Voltage: 100 - 240V
- Drop Stand® opens and closes automatically
- Flexible Arm provides remarkable light positioning options



LUMINOUS PRO LED VIDEO LIGHT

A versatile LED light source for photographers and videographers on-the-go. The ultra thin, lightweight design includes 204 LED chips with adjustable temperature from 3200K to 5400K. The included NP-F750 Sony batteries provide 3 hour run-time when used at full power, or use the 4.5' AC adapter power cord when a power source is available. Multiple LED Video Lights are connectable with the optional Multi-Light Connector 2 Pack. The connectors allow multiple lights to connect and pivot up to 15 degrees to create a wraparound light effect.

LUMINOUS PRO LED VIDEO LIGHT MULTI LIGHT CONNECTOR 2 PACK

LED204
LED204-C



STEPLESS DIMMER, COLOR TEMPERATURE
ADJUSTMENT & BATTERY LEVEL INDICATOR



LIGHT INCLUDES BATTERY, CHARGER AND TILTABLE SHOE MOUNT



NEW

600W LED PORTRAIT LIGHT KIT

The new Savage LED Portrait Kit is an ideal lighting solution for both studio work and location photography. Each of the two dimmable high-powered lights comprise 176 chip-on-board LEDs, which together produce the equivalent of 600W incandescent light while only utilizing 70W of electricity. Two included 20" softboxes pop open for quick and easy setup to create soft, even lighting for high-quality portraiture.

KIT INCLUDES:

- (2) Dimmable 176 chip on board LED lights
- (2) Quick-open softboxes with detachable baffles
- (2) 6' Light stands
- (2) Protective pouches for LED lights
- (2) AC Universal power cords
- (1) Padded carry bag



LED PORTRAIT KIT LED-SB

FEATURES :

- CRI: 90
- DB: 10
- Kelvin: 5600K
- Lumens at 1m: 856 w/diffuser
- Actual watts: 35 per light
- Voltage: 100 - 240V



500W LED STUDIO LIGHT KIT

Features two energy efficient, fan-cooled tri-band technology 30W LED chip bulbs, generating the equivalent of 250W incandescent light; 5500K daylight balanced light, providing 20,000 hours of lamp life.

KIT INCLUDES:

- (2) 250W LED lights
- (2) Umbrella sockets & 9' power cords
- (2) 33" Translucent reflector umbrellas
- (2) 6' Light stands
- (1) Carry bag



500 WATT LED STUDIO LIGHT KIT

30 WATT LED BULB ONLY (250W EQUIVALENT)

50 WATT LED BULB ONLY (350W EQUIVALENT)

LED60K

LED30

50WLED

FEATURES :

- CRI: 90
- DB: 2
- Kelvin: 5500K
- Lumens at 1m: 2130
- Actual watts: 35
- Voltage: 100 - 230V



LED VIDEO LIGHT PLUS

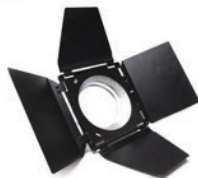
The new Savage LED Video Light Plus features a Fresnel lens with an output of 3500 lumens at 1m when used with included 7" reflector, or 2200 lumens at 1m without. This LED light is lightweight, long-lasting and energy-saving, using only 40 watts of electricity at full power. The cooling fan is whisper-quiet allowing it to be ideal for video applications as well as photography. Use with AC power for extended periods of time, or use included battery for up to 50 minutes when on location. A convenient remote control allows users to easily and quickly adjust power settings from anywhere around their set.

LED VIDEO LIGHT PLUS

LED-V



15" x 15" SOFTBOX ACCESSORY
SBB



BARNDOOR ACCESSORY
BBD

FEATURES :

- CRI : 91
- DB: 5
- RA: 95
- Kelvin: 5600K
- Lumens at 1m: 3500 w/ reflector
- Lumens at 1m: 2200 w/out reflector
- Actual watts: 40
- Voltage: 100 - 240V
- Dimmer capability 0-100%
- Battery life is approximately 1 hour
- Fresnel lens maximizes light output



INCLUDES WIRELESS REMOTE



PRODUCT PHOTOGRAPHY

PRODUCT PRO LED LIGHT TABLE

The Savage Product Pro LED Light Table is every commercial photographer's solution to capturing professional quality product photography without the hassle of compiling an array of complicated lighting and background gear for small subjects. Simply flip a switch and the powerful LED light strips under the table brightly illuminate evenly across the table, creating an instant high-key background. Each rechargeable LED light contains 36 LED chips with a CRI of 91, and are mounted on heavy-duty flexible arms, providing high quality backlight, highlights, and under lighting where needed.

INCLUDES:

- (1) LED lighted table (CRI 91)
- (1) Accessory tray
- (4) Rechargeable 36 bulb LED lights
- (4) AC power cords for charging lights
- (4) Diffuser socks
- (4) 20" Flexible arms
- (1) Nylon protective sleeve



PRODUCT PRO LED LIGHT TABLE	15" x 15"	(38.1cm x 38.1cm)	LED-PT15
PRODUCT PRO LED LIGHT TABLE	22" x 22"	(55.8cm x 55.8cm)	LED-PT22



EXPERIMENT WITH BACKGROUND SWEEPS, GELS AND DIFFUSORS



FLEXIBLE ARMS ALLOW RECHARGEABLE LED LIGHTS TO BE PLACED ANYWHERE



MINIMIZE POST PRODUCTION

THE ILLUMINATED LED LIGHT TABLE EASILY CREATES HIGH-KEY BACKGROUNDS WITH THE TOUCH OF A BUTTON

LUMINOUS PRO LED SHOOTING TENT

Two daylight balanced LED light strips run from the front of the box to the rear ensuring shadowless light. The flicker free LED color corrected (5500k + or - 200K) light source is designed to bring out the true colors of jewelry, collectibles & commercial products. The LED bulbs are low energy & long-lasting, eliminating the need for frequent bulb replacement.

LED SHOOTING TENT 15.5" x 15.5" x 15.5" (39.4cm x 39.4cm x 39.4cm) **PC15 SWP15**
12 ADDITIONAL SEAMLESS PAPER BACKGROUND COLORS

LED SHOOTING TENT 23.5" x 23.5" x 23.5" (58.4cm x 58.4cm x 58.4cm) **PC23 SWP23**
12 ADDITIONAL SEAMLESS PAPER BACKGROUND COLORS

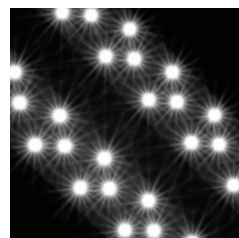
FEATURES :

- LED strips & reflective interior create perfect lighting
- Dual stepless controls allow each LED strip to be dimmed
- Multiple access points allow for various shooting angles
- Quick disassembly allows for easy transport and storage
- Plastic backgrounds: White, Black, Chroma Green & Blue
- 12 Colorful seamless paper background sweeps



ADJUST BRIGHTNESS OF EACH LED STRIP WITH INDEPENDENT DIMMERS

NEW



NOW INCLUDES 12 NEW SEAMLESS PAPER BACKGROUND COLORS & INDEPENDENT LED LIGHT DIMMERS

BACKGROUND STANDS

MULTIPLE POLEVAULT BACKGROUND STAND

An exceptionally strong, yet lightweight stand that can support either three rolls of 107" (272cm) background paper or one roll of 140" (355cm) background paper. No tools required.

MULTIPLE POLEVAULT BACKGROUND STAND 63151

REPLACEMENT UPRIGHT - EXTENDS TO 9'4" (284CM) 01

REPLACEMENT CROSSBAR 1 - OPENS TO 12' 7" (384cm) , COLLAPSES TO 60" (152cm) 03

REPLACEMENT CROSSBAR 2 & 3 - OPENS TO 10' 4" (314cm) , COLLAPSES TO 65" (165cm) 05



MP2



MP3



PORT-A-STAND BACKGROUND STAND

A versatile, compact metal portable background stand in a matte black finish. This stand is perfect for on-location photo shoots. Accommodates 53" x 12yds (134cm x 11m), 107" x 12yds (272cm x 11m) rolls of paper or up to 10' wide cloth backdrops. Carry bag included.

No tools required.

PORT-A-STAND BACKGROUND STAND 62037

PORT-A-STAND WITH WHITE 53" PAPER KIT 62037-50K

PORT-A-STAND REPLACEMENT CARRYING BAG 06

REPLACEMENT UPRIGHT - EXTENDS TO 9'4" (284CM) 04

REPLACEMENT CROSSBAR - OPENS TO 10' 4" (314cm) , COLLAPSES TO 65" (165cm) 05



PS1



PS4



PS5



ECONOMY BACKGROUND STAND

Ideal for the student or part-time photographer. Collapsible, and holds 53"(134cm) or 107" (272cm) Seamless Background Paper. Matte black finish. No tools required. Comes complete with bag.

ECONOMY BACKGROUND STAND 60099

REPLACEMENT UPRIGHT - EXTENDS TO 7' 9" (236CM) 07

REPLACEMENT CROSSBAR - OPENS TO 10' 4" (314cm) , COLLAPSES TO 46" (117cm) 08





12X12 BACKGROUND STAND

An exceptionally strong, yet lightweight stand that can support backgrounds up to 12' (3.6m) wide and 12' (3.6m) high. No tools required.

- Uprights extend to 12' (3.6m) high
- Crossbar extends to 12' (3.6m) wide
- Reinforced crossbar consists of four sections to reduce sag
- Crossbar also usable with only three sections when 10' wide applications are needed
- Includes heavy-duty carry bag
- Weight limit: 20lbs



MULTI-SECTION, SNAP-TOGETHER CROSSBAR ALLOWS FOR SIMPLE EXTENDING & SHORTENING OF CROSSBAR

12' x 12' BACKGROUND STAND

601212



UNIVERSAL BACKGROUND STAND

The Universal Background Stand has special features that make it an advantageous support system for large studios. With 3 upright stands and interlocking crossbars, the stand can extend out to 24' for extra-wide theater productions or large commercial shoots. A unique middle bracket allows for the stand to be set up in a corner space as well. Easily pivot and reposition stands to achieve any angle you desire.

- Extends to 24' w x 10' h (7.31m x 3.04m)
- Four-section crossbar is reinforced to reduce sag
- Stand usable with only 3 crossbar sections when 10' wide applications are preferred
- Use as double-wide stand, corner stand or configure custom angles per your needs
- Can support multiple backgrounds, making it ideal for quick scene changes
- Weight limit: 20lbs per section



MULTI-SECTION, SNAP-TOGETHER CROSSBAR ALLOWS FOR SIMPLE EXTENDING & SHORTENING OF CROSSBAR



INNOVATIVE BRACKET DESIGN ALLOWS FOR QUICK & EASY PIVOTING & REPOSITIONING OF UPRIGHTS



DOUBLE-WIDE OR MULTIPLE BACKDROP CONFIGURATION
24'W X 10'H (7.31m X 3.04m)



90° OR CORNER CONFIGURATION
TWO 12'W X 10'H (3.6m X 3.04m) SECTIONS

UNIVERSAL BACKGROUND STAND

601024

L I G H T S T A N D S

DROP STAND® EASY SET LIGHT STAND

The Drop Stand by Savage features unique auto-collapse and extend legs. Simply place the stand on the ground to extend the legs for secure use. Pick the stand up, and the legs automatically retract to allow for quick and easy repositioning of lighting when moving between groups and in tight spaces. No more bending down to adjust leg locks.

7' STAND (2.13m) DS-007
9' STAND (2.74m) DS-009
13' STAND (3.96m) DS-013

JUST DROP & SHOOT!

No knobs. No hassle. No problem!



Patent # 6,454,228 B1 & 5,934,628



FEATURES :

- Gently push down to automatically extend legs, Pick up to automatically retract legs
- Reversible 1/4"-20 and 3/8" stud adapter usable in either the top or side of stand
- Air dampened to prevent accidental equipment crashes while lowering
- Aluminum collars



DELUXE BACKLIGHT STAND

- 3' (91cm) height
- Spigot on base for low use

LS-3HB



DELUXE BACKLIGHT STAND

- 3' (91cm) height
- Min. Use Height 17.5" (44.5cm)

LS-3BL



ALUMINUM LIGHT STAND

- Air cushioned
- 1/4"-20 & 3/8" threaded stud

8' (244cm) LS-C8
10' (305cm) LS-C10AC



HEAVY DUTY LIGHT STAND

- Air cushioned
- 1/4"-20 & 3/8" threaded stud

10' (305cm) LS-B10AC
13' (396cm) LS-B13AC



LIGHT BOOM ARM AND STAND

- Two sections with 1/4"-20 & 3/8" Stud
- Comes with empty sand bag & carry case
- Height: 42.5" - 73.2" (108cm-186cm)
- Boom Length: 47.6"-83" (121cm-211cm)

BOOM ARM & STAND LS-B100
BOOM ARM ONLY LS-AB101

UMBRELLAS & REFLECTORS



TRANSPARENT UMBRELLA

36" (91cm) PUR-36T
43" (109cm) PUR-84T



BLACK/WHITE UMBRELLA

36" (91cm) PUR-36WB
43" (109cm) PUR-84WB



BLACK/SILVER UMBRELLA

36" (91cm) PUR-36SB
43" (109cm) PUR-84SB



BLACK/GOLD UMBRELLA

36" (91cm) PUR-36BG
43" (109cm) PUR-84BG



UMBRELLA SOFTBOX

36" (91cm) USB36
43" (109cm) USB43



UMBRELLA SOFTBOX BOUNCE

36" (91cm) USB36B
43" (109cm) USB43B



BRIGHT SILVER REFLECT-O-BOARD

1825

Bright Silver Reflect-O-Board adds a cool touch to reflected light and provides a heavier contrast when a powerful, yet neutral fill light is desired. Bright Silver has a shiny finish for a more powerful effect. Reflective front with white back. Sized to 32" x 40". (25/carton)

DULL SILVER REFLECT-O-BOARD

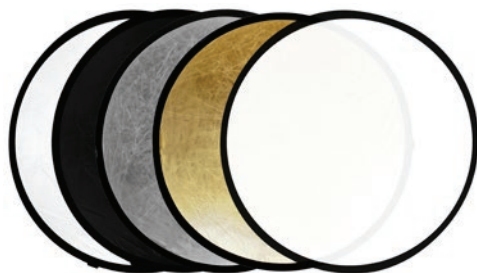
1820

The finish on Dull Silver Reflect-O-Board provides a bit more contrast than just plain white reflectors and cools down warm light in situations calling for it. This finish provides a softer, more diffused effect than our Bright Silver Reflect-O-Board. Reflective front with white back. Sized to 32" x 40". (25/carton)

DULL GOLD REFLECT-O-BOARD

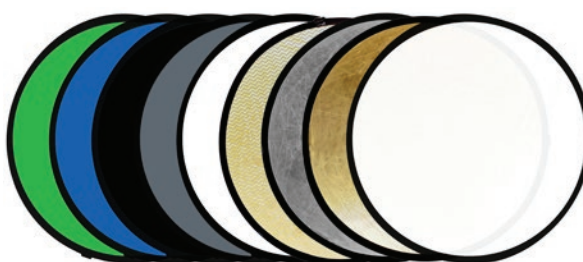
1835

Dull Gold Reflect-O-Board adds a warm touch to reflected light and makes the most of afternoon light as it fades. Dull Gold has a soft, matte finish and will produce a softer, more diffused effect. Reflective front with white back. Sized to 32" x 40". (25/carton)



5-IN-1 REFLECTOR WITH CARRY BAG

Translucent, Gold, Silver, Black, White



9-IN-1 REFLECTOR WITH CARRY BAG

Translucent, Gold, Silver, Daylight, White, 18% Gray, Black, Chroma Green & Chroma Blue



22" (55cm) ROUND 5-IN-1 RF5-122
32" (81cm) ROUND 5-IN-1 RF5-132
43" (109cm) ROUND 5-IN-1 RF5-143
36" x 48" (91cm x 152cm) RECTANGULAR 5-IN-1 RF5-13648
40" x 60" (101cm x 121cm) RECTANGULAR 5-IN-1 RF5-14060

22" (55cm) ROUND 9-IN-1 RF9-122
32" (81cm) ROUND 9-IN-1 RF9-132
43" (109cm) ROUND 9-IN-1 RF9-142
43" (109cm) ROUND 9-IN-1 KIT WITH STAND RF9-KIT

9-IN-1 KIT INCLUDES:
43" ROUND REFLECTOR
BOOM ARM & REFLECTOR HOLDER
9' AIR DAMPENED STAND & CARRY BAG

STUDIO ACCESSORIES

LAVALIER MICROPHONE



Lavalier Microphone is a clip-on microphone for DSLRs, smart phones, video cameras, PCs and more. The high quality, omni-directional condenser microphone is ideal for video use. Includes lapel clip, LR44 battery, windscreen & 1/4" adapter.

CLIP-ON LAVALIER MICROPHONE **MIC-CELL**

DSLR STEREO MICROPHONE



Stereo Microphone for smart phones, DSLRs, smart phones, video cameras, PCs and more. Compact stereo microphone features selectable pickup patterns 90° or 120°. Includes foam windshield, windscreen, pouch & LR44 battery.

DSLR STEREO MICROPHONE **MIC-DSL**

MACRO ART EXTENSION TUBES

The Savage MACRO ART variable auto-extension tube is an exclusive accessory for DSLR macro photography that combines the three most common automatic extension tubes into one integrated range. Conveniently adjust magnification strength without changing tubes to proficiently capture fine detail with ease.



NIKON MACRO ART TUBE **AETN**



CANON MACRO ART TUBE **AETC**

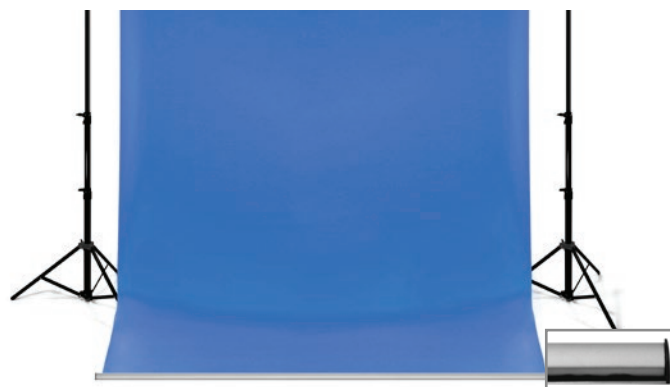


This accessory for DSLR macro photography provides a flexible, daylight balanced light source to illuminate fine detail captured at close range. Mounts to camera with hot shoe.

ADJUSTABLE DUAL ARM LED LIGHT **LGHTF**

LEADER BAR

The Savage Background Leader Bar is a two-piece aluminum bar that quickly and easily attaches to the bottom edge of paper, vinyl, or cloth backgrounds. The weight of the Leader Bar reduces ripples and draping, prevents curling, and helps positions the background for a perfect sweep. All Leader Bars include a free roll of Super White Seamless Background Paper (#01 pg.4)



SMALL LEADER BAR 4.8' (136cm) **LB153** *FREE 53" SUPER WHITE SEAMLESS PAPER!*

LARGE LEADER BAR 8.9' (272cm) **LB112** *FREE 107" SUPER WHITE SEAMLESS PAPER!*

GAFFER TAPE



Savage Gaffer Tape is available in standard matte black, gray, chroma green & white, in 1" and 2" options. The cloth backing with polyethylene coating is heat-resistant to 175° Fahrenheit for up to three hours. Blended synthetic resin & natural rubber compound allows for non-transferring adhesion. Always a clean removal with no residue.

BLACK

4 PACK 1" x 55 YARDS (25mm x 50m) **T-GB4-1**
20 PACK 1" x 55 YARDS (25mm x 50m) **T-GB20-1**
4 PACK 2" x 55 YARDS (50mm x 50m) **T-GB4**
20 PACK 2" x 55 YARDS (50mm x 50m) **T-GB20**

GRAY

4 PACK 1" x 55 YARDS (25mm x 50m) **T-GG4-1**
20 PACK 1" x 55 YARDS (25mm x 50m) **T-GG20-1**
4 PACK 2" x 55 YARDS (50mm x 50m) **T-GG4**
20 PACK 2" x 55 YARDS (50mm x 50m) **T-GG20**

GREEN

4 PACK 1" x 55 YARDS (25mm x 50m) **T-GN4-1**
20 PACK 1" x 55 YARDS (25mm x 50m) **T-GN20-1**
4 PACK 2" x 55 YARDS (50mm x 50m) **T-GN4**
20 PACK 2" x 55 YARDS (50mm x 50m) **T-GN20**

WHITE

4 PACK 1" x 55 YARDS (25mm x 50m) **T-GW4-1**
20 PACK 1" x 55 YARDS (25mm x 50m) **T-GW20-1**
4 PACK 2" x 55 YARDS (50mm x 50m) **T-GW4**
20 PACK 2" x 55 YARDS (50mm x 50m) **T-GW20**

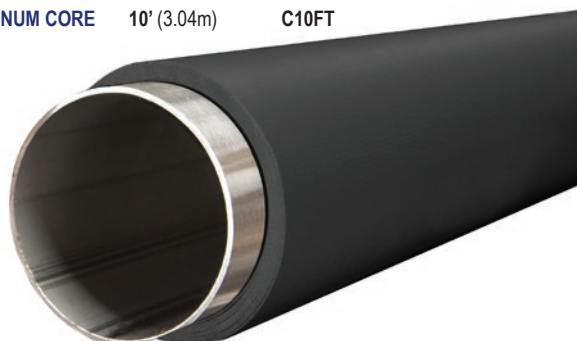
ALUMINUM CORE

This rigid aluminum core is meant to be used with Savage Infinity Vinyl Backdrops. Simply insert the aluminum tube into the existing corrugated core to increase stability and eliminate sagging.

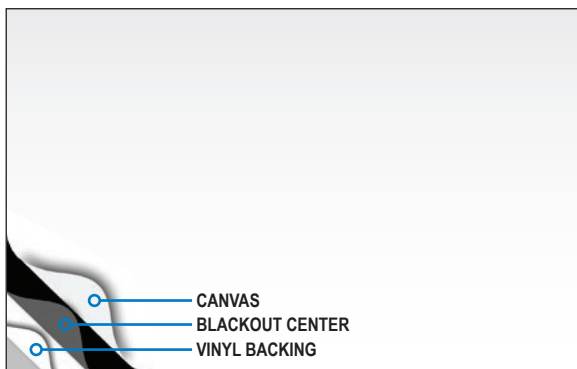
Specs: 2.25" Outside diameter / 2.125" Inner diameter, 9' and 10' length

ALUMINUM CORE 9' (2.75m) **C09**

ALUMINUM CORE 10' (3.04m) **C10FT**



SPECIALTY BACKGROUNDS



PORTRAIT WHITE CANVAS

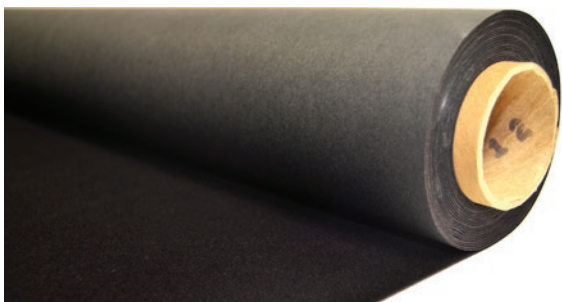
Savage Canvas features a unique three layer construction. The top layer consists of a quality canvas material. The middle layer is made of heavy-duty blackout material to prevent passing light. The bottom layer is made of durable vinyl backing to protect and preserve the background from damage.

9' x 10' (2.74m x 3.04m) C50-0910

9' x 20' (2.74m x 6.09m) C50-0920

- Professional quality heavy-duty canvas
- Blackout center prevents light from passing through
- Durable tear-resistant construction with vinyl backing
- Matte finish—no glare
- 3" rod pocket at the top for easy hanging

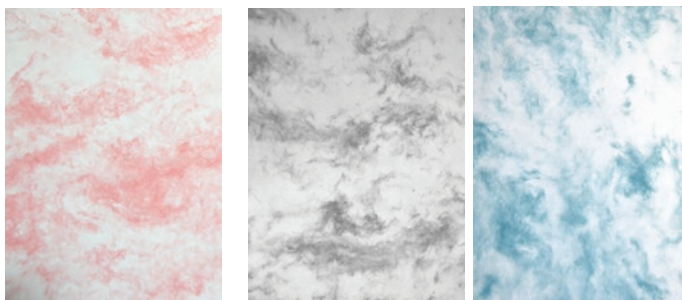
MIDNIGHT BLACK VELVETEEN



Savage Midnight Black Velveteen is a non-reflective velvet-like tabletop background material with a paper backing. Wound on a sturdy core.

BLACK VELVETEEN 52" x 20' (1.32m x 6.09m) ROLL 522020

ROYAL MARBLE PAPER



Marbled effect, random, non-repeating design in soft colors. Rolls are corewound in a 78" x 36' (2m x 11m) size and ideal for tabletop and portrait photography.

RED RM0778

GRAY RM1278

BLUE RM5878

THE PAPER CLIP

Roll storage helps keep backgrounds clean and free from damage. The flexible polyurethane mounts to wall with durable, long-lasting adhesive strips. Each pair measures 3" x 6" x 33" and holds 12 rolls and multiple sets can be placed side by side along any suitable wall space. Protects rolls and allows easy color visibility for quick inventory. Holds up to 107" x 12yd rolls (2.72m x 11m).

D-TPC12



SEAMLESS FLOOR DISPLAY

Holds twelve 53" Seamless Paper rolls (sold separately).

15"w x 36"h x 12"d
(38.1cm x 91.4cm x 30.5cm)

D-125312



TRANSLUM FLOOR DISPLAY

Holds twelve Translum rolls (sold separately).

15"w x 36"h x 12"d
(38.1cm x 91.4cm x 30.5cm)

D-125312T



PRINTED FLOOR DISPLAY

Holds twelve 53" Printed Paper rolls (sold separately).

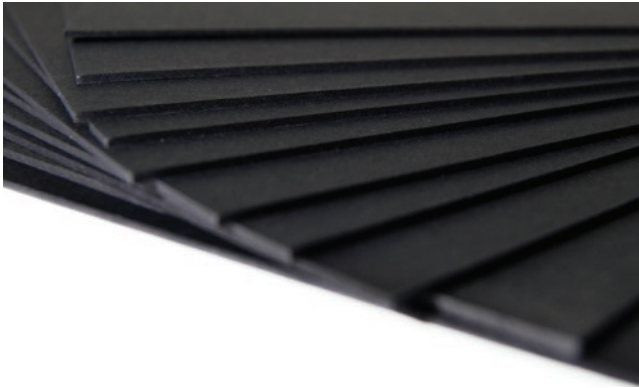
15"w x 36"h x 12"d
(38.1cm x 91.4cm x 30.5cm)

D-125312PB



MAT & MOUNT BOARDS

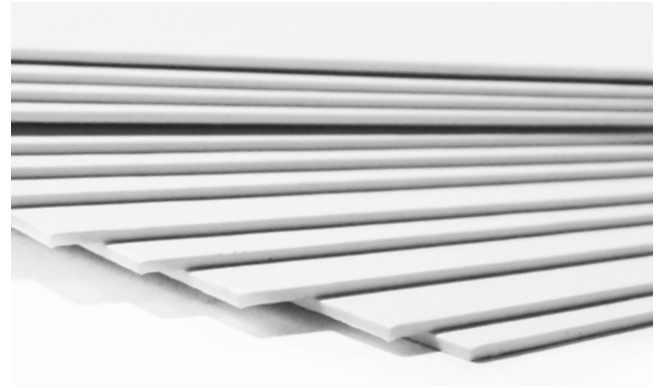
PRESENTATION MOUNT BOARDS



TRUBLACK PRESENTATION BOARD

A neutral deep board that is significantly blacker than standard presentation board. With a solid black core and black facing on both sides, our TruBlack Black Presentation Mount Board surrounds images with the deepest, richest black available. Ideal for surface mounting prints and artwork. Tape and adhesives work well with this board. Thickness: 1/16" / 40pt. / 4ply

8" x 10" (10sht/pk)	200 / CTN.	414001
11" x 14" (10sht/pk)	100 / CTN.	414002
15" x 20" (10sht/pk)	100 / CTN.	414003
16" x 20" (10sht/pk)	100 / CTN.	414004
30" x 40"	25 / CTN.	414006
20" x 30"	25 / CTN.	414007
32" x 40"	25 / CTN.	414008



TRUWHITE PRESENTATION BOARDS

TruWhite is white core board lined on both sides with super white paper, ideal mounting board for photos and finished artwork. The bright TruWhite surface provides a maximum contrast making it easy to adapt to several medias along with graphic layouts. Tape and adhesives work well with this board. Thickness: 1/16" / 40pt. / 4ply

8" x 10" (10sht/pk)	200 / CTN.	18011
11" x 14" (10sht/pk)	100 / CTN.	18012
15" x 20" (10sht/pk)	100 / CTN.	18013
16" x 20" (10sht/pk)	100 / CTN.	18014
20" x 30"	25 / CTN.	18015
30" x 40"	25 / CTN.	18016
32" x 40"	25 / CTN.	18017

DOUBLE THICK MOUNT BOARDS

Savage Double Thick Mount Board is available in sizes 8x10, 11x14, 16x20, and available in packages of ten. Sizes 20x24, 20x30, 30x40, 32x40 available in bulk packs. This non-adhesive mount board is suitable with most adhesives. Thickness: 1/8" / 90pt. / 8ply.



BLACK/WHITE NEWS CORE CUT SIZE MOUNT BOARD

8" x 10" BLACK / WHITE DOUBLE THICK	100 / CTN	1718
11" x 14" BLACK / WHITE DOUBLE THICK	50 / CTN	1720
16" x 20" BLACK / WHITE DOUBLE THICK	50 / CTN	1724
20" x 24" BLACK / WHITE DOUBLE THICK	24 / CTN	1726
20" x 30" BLACK / WHITE DOUBLE THICK	24 / CTN	1728
32" x 40" BLACK / WHITE DOUBLE THICK	12 / CTN	1730



WHITE/WHITE NEWS CORE CUT SIZE MOUNT BOARD

8" x 10" WHITE / WHITE DOUBLE THICK	100 / CTN	1893
11" x 14" WHITE / WHITE DOUBLE THICK	50 / CTN	1894
16" x 20" WHITE / WHITE DOUBLE THICK	50 / CTN	1895
20" x 24" WHITE / WHITE DOUBLE THICK	24 / CTN	1896
20" x 30" WHITE / WHITE DOUBLE THICK	24 / CTN	1897
32" x 40" WHITE / WHITE DOUBLE THICK	12 / CTN	1898

CUT SIZE MAT BOARD

Savage Cut-Size Mat Board is available in sizes 8x10, 11x14 and 16x20 in packages of ten. Sizes 20x24, 30x40 and 32x40 available in bulk pack cartons. Made from the finest cream core pulp and acid free papers. Thickness: 1/16" / 50pt. / 4ply



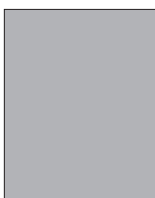
WHITE SMOOTH CUT SIZE MAT BOARD - CREAM CORE

8" x 10" WHITE / CREME SMOOTH	200 / CTN	15011
11" x 14" WHITE / CREME SMOOTH	100 / CTN	15012
16" x 20" WHITE / CREME SMOOTH	100 / CTN	15014
20" x 24" WHITE / CREME SMOOTH	50 / CTN	15015
30" x 40" WHITE / CREME SMOOTH	25 / CTN	15016
32" x 40" WHITE / CREME SMOOTH	25 / CTN	15017



BLACK SMOOTH CUT SIZE MAT BOARD - CREAM CORE

8" x 10" BLACK / WHITE SMOOTH	200 / CTN	15401
11" x 14" BLACK / WHITE SMOOTH	100 / CTN	15402
16" x 20" BLACK / WHITE SMOOTH	100 / CTN	15404
20" x 24" BLACK / WHITE SMOOTH	50 / CTN	15405
30" x 40" BLACK / WHITE SMOOTH	25 / CTN	15406
32" x 40" BLACK / WHITE SMOOTH	25 / CTN	15407



GRAY SMOOTH CUT SIZE MAT BOARD - CREAM CORE

8" x 10" GRAY / WHITE SMOOTH	200 / CTN	15351
11" x 14" GRAY / WHITE SMOOTH	100 / CTN	15352
16" x 20" GRAY / WHITE SMOOTH	100 / CTN	15354
20" x 24" GRAY / WHITE SMOOTH	50 / CTN	15355
30" x 40" GRAY / WHITE SMOOTH	25 / CTN	15356
32" x 40" GRAY / WHITE SMOOTH	25 / CTN	15357

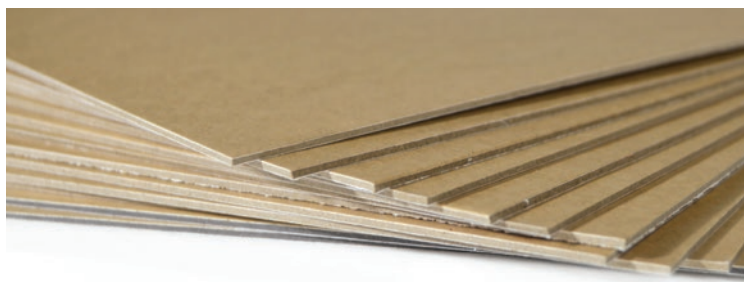
NUCOR FOAM MOUNT BOARDS



Suitable for the mounting of a variety of artwork, photographs and textiles. Due to its rigid construction NuCor® is well suited for any mounting project that requires a warp-resistant, smooth substrate. NuCor® can be easily cut using standard cutting tools. NuCor® is available in Pressure Sensitive or Plain. 3/16" Thickness. pH neutral.

NUCOR® PRESSURE SENSITIVE			NUCOR® PLAIN UNCOATED WHITE		
11" x 14"	25 / CTN	35502-PS	30" x 40"	6 / CTN	15512
16" x 20"	25 / CTN	35504-PS			
20" x 24"	12 / CTN	35505-PS			
20" x 30"	12 / CTN	35506-PS			
24" x 30"	6 / CTN	35508-PS			
30" x 40"	6 / CTN	35510-PS			
32" x 40"	6 / CTN	35512-PS			

PRESTAX NEWS CENTER MOUNT BOARDS



A superior, pH neutral, pressure sensitive mounting board that is simple, fast and economical to use. It requires no tissue, no heat, and no special equipment. It is a must for people in the photographic, fine art or commercial art fields. Prestax® by Savage is perfect for mounting prints, photos, watercolors, etc.

Available in three thicknesses.

PRESTAX® PRESSURE SENSITIVE LT.WT. (1/32" / 30PT)

8" x 10"	300 / CTN	30032
11" x 14"	150 / CTN	30034

PRESTAX® PRESSURE SENSITIVE MED.WT. (1/16" / 50PT)

8" x 10"	200 / CTN	30050
11" x 14"	100 / CTN	30052
16" x 20"	100 / CTN	30054

PRESTAX® PRESSURE SENSITIVE HVY.WT. (1/8" / 90PT)

8" x 10"	100 / CTN	30090
11" x 14"	50 / CTN	30092
16" x 20"	50 / CTN	30094
20" x 24"	25 / CTN	30096
20" x 30"	24 / CTN	30097
30" x 40"	12 / CTN	30098
32" x 40"	12 / CTN	30099

PROMATTES

PROMATTE - SINGLE MAT STANDARD SIZES

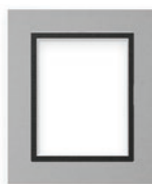


	MAT SIZE	5" x 7"	8" x 10"	8" x 10"	11" x 14"	12" x 16"	16" x 20"
COLORS	PRINT SIZE	3.5" x 5"	4" x 6"	5" x 7"	8" x 10"	8" x 12"	11" x 14"
001 NAVY		5002001	6001001	6002001	7004001	7535001	9004001
006 MERLOT		5002006	6001006	6002006	7004006	7535006	9004006
281 IVORY		5002281	6001281	6002281	7004281	7535281	9004281
328 POLAR WHITE		5002328	6001328	6002328	7004328	7535328	9004328
462 OXFORD GRAY		5002462	6001462	6002462	7004462	7535462	9004462
469 MATTE BLACK		5002469	6001469	6002469	7004469	7535469	9004469



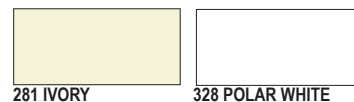
001 NAVY

006 MERLOT



PROMATTE - DOUBLE MAT STANDARD SIZES

	MAT SIZE	5" x 7"	8" x 10"	8" x 10"	11" x 14"	16" x 20"
COLORS	PRINT SIZE	3.5" x 5"	4" x 6"	5" x 7"	8" x 10"	11" x 14"
281 IVORY/281 IVORY		5281281	65281281	6281281	7281281	9281281
328 POLAR WHITE/328 POLAR WHITE		5328328	65328328	6328328	7328328	9328328
328 POLAR WHITE/469 MATTE BLACK		5328469	65328469	6328469	7328469	9328469
462 OXFORD GRAY/469 MATTE BLACK		5462469	65462469	6462469	7462469	9462469
469 MATTE BLACK/469 MATTE BLACK		5469469	65469469	6469469	7469469	9469469



281 IVORY

328 POLAR WHITE



462 OXFORD GRAY

469 MATTE BLACK

PRO MATTE WATERFALL WIRE DISPLAY

6 Facings - 10 Double Mats or 20 Single Mats per facing.
(Product sold separately)

5" x 7"	WR57	6" w x 25.5" h x 14" d
8" x 10"	WR810	8" w x 25.5" h x 14" d
11" x 14"	WR1114	12" w x 25.5" h x 14" d
16" x 20"	WR1620	21" w x 26.5" h x 16" d

PRO MATTE HANGING OR COUNTER TOP DISPLAY

9 Facings, 10 Double Mats or 20 Single Mats per Facing.
(Product sold separately)

D-526275MTY 21" w x 17.75" h x 10.25" d

Purchase \$250 worth of Promattes and choose rack display at no charge.



